

233. House for
contemporary art. N.Y.
2003 - 2010



Eric Klarenbeek, 'Work Survey' (film still), 2008



Maarten Baas, 'Sweeper-Clock', 2009, photo: Liesje Reyskens



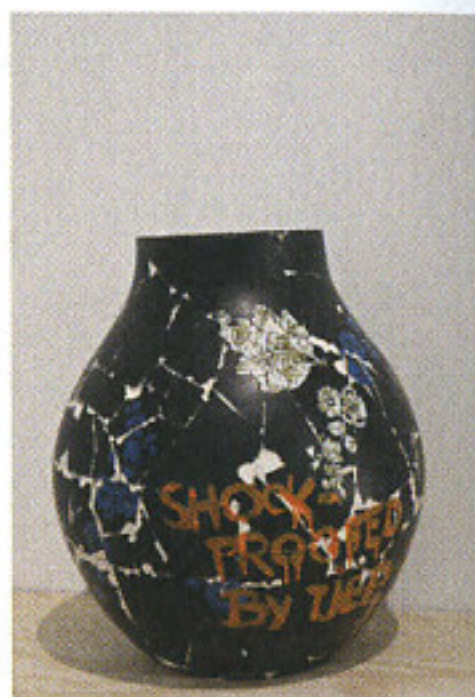
Maarten Baas, 'Sweeper-Clock', 2009, photo: Liesje Reyskens



Martino Gamper, 'Learning while performing, and performing while learning', commission Z33, 2010



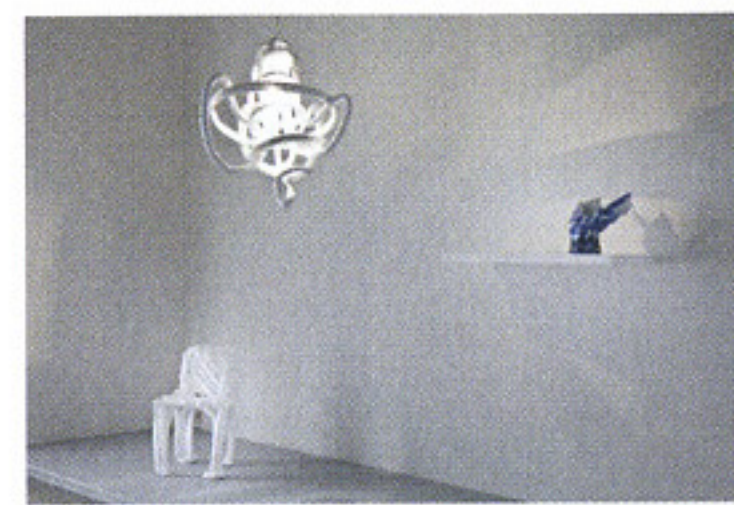
Pieke Bergmans, 'Light Blubs', 2008, photo: Liesje Reyskens



Tjep., 'Shock Proof Jonsberg designed by Hella Jongerius', 2006



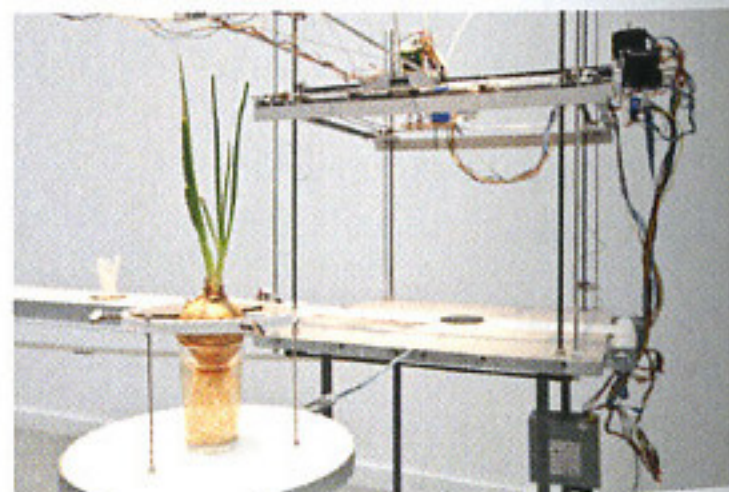
Tjep., 'Do Break', 2001



Installation view: Front Design, 'Blow Away Vase', 2009 / 'Sketch Furniture', 2005



Atelier NL, 'Sleeping Beauty', 2006, photo: Liesje Reyskens



David Bowen, 'Growth Modeling Device', 2009



Unfold & Tim Knapen, 'L'Artisan Electronique', commission Z33, 2010



Unfold & Tim Knapen, 'L'Artisan Electronique', commission Z33, 2010



Simon Heijdens, 'Lightweeds', 2006, photo: Liesje Reyskens



Simon Heijdens, 'Lightweeds', 2006, photo: Liesje Reyskens



Lawrence Malstaf, 'Nevel', 2004



Lawrence Malstaf, 'Nevel', 2004